

Photo 4.31 Inclination of timber piles of high voltage transmission line in San Fernando. No damage reported on high voltage ceramic breakers at transformer site in the port of San Fernando.

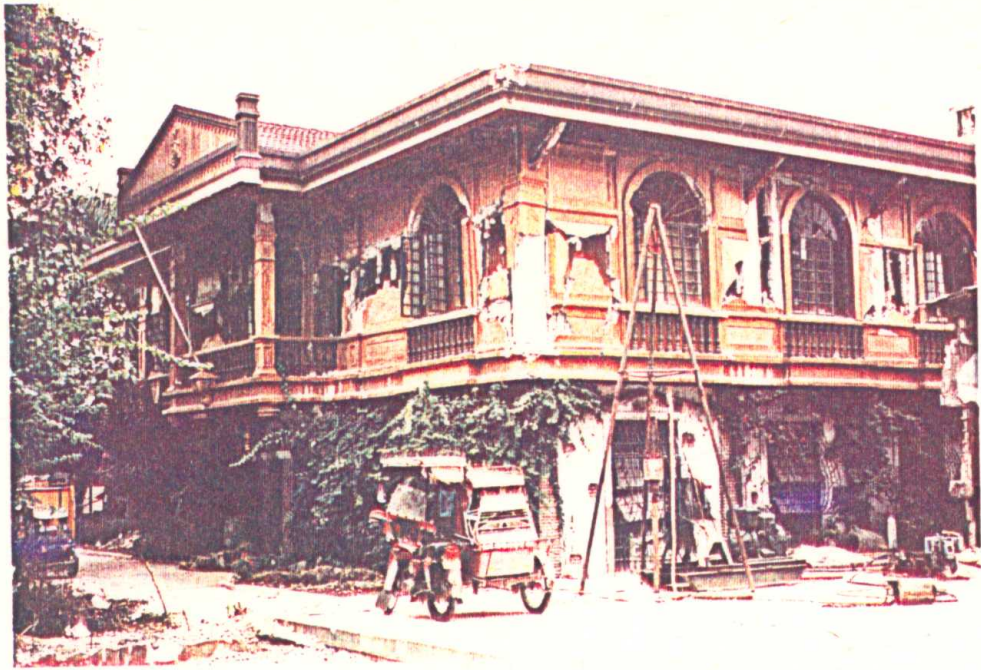


Photo 4.32 Heavily damaged 2 story r.c. frame building of the Museum at Agoo. Dominant nonstructural damage of facade and infill masonry walls.



Photo 4.33 Historic townscape of Centre of Baguio City along the Session Road, lightly damaged.



Photo 4.34 Cathedral at baguio City, damaged towers and failure of right side tower indicates dominant frequency content of the earthquake ground motions in Baguio.