



Photo 4.12 Failure of six story Country Club (Baguio City) second floor completely collapsed due to failure of r.c. low ductility frame, deep lintel beams and pronounced torsional effect.

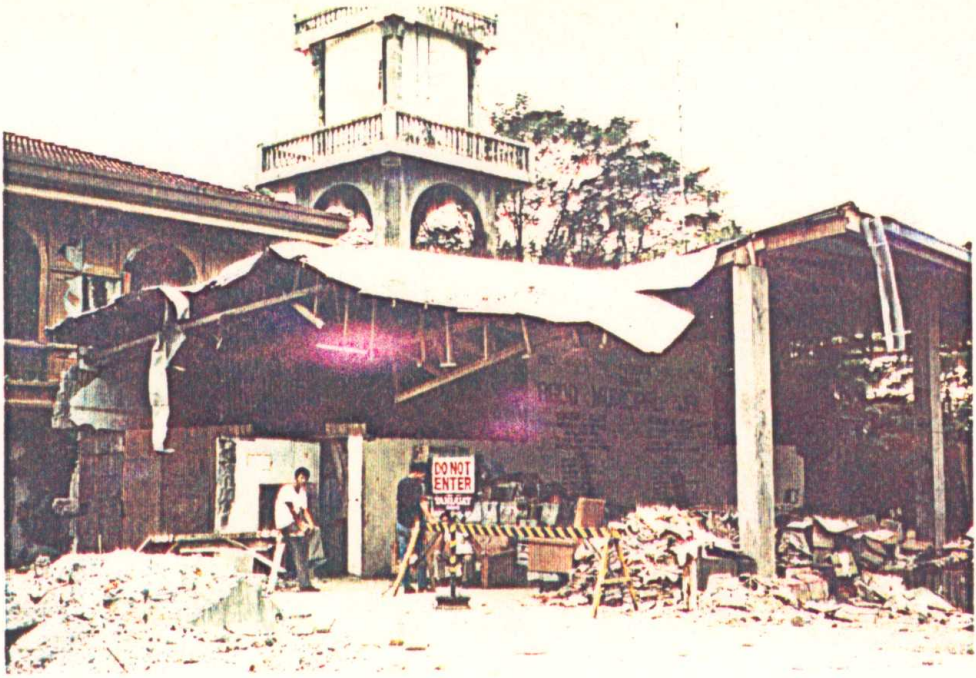


Photo 4.13 Partial failure of the jail building in Ago. No considerations are made to be earthquake-resistant building.



Photo 4.14 Partial structural damage of a 3-story r.c. frame building sited on a low inclined slope (St. Louis Girls High School, Baguio City).



Photo 4.15 Shear mode of failure of r.c. column in the ground floor of the 3-story school building shown in the previous photo.